



TONACHINO FIRENZE™

Lime based Plaster – (Sand finish)

GET YOUR DVD!

Learn to do it at your own pace

Customers can purchase a comprehensive, professionally produced DVD guide, which covers our entire product line. The DVD clearly and simply explains every step of the application process. Learn how to apply Venetian plaster, Marmorino plaster, "Old-World" textures, metallic and stone effects, stencils integration and much, much more.



Tonachino Firenze™ a genuine lime-based, Venetian plaster features easy application and exceptional durability for interior and exterior applications. **Tonachino Firenze™** is a contemporary version of the early, Italian plaster which is known for its warmth and dramatic appearance. Its natural makeup, gives **Firenze™** the authentic, "Old-World", sand finish sought by architects and designers around the world. A unique blend of natural ingredients including slaked lime, river sands, powdered marble and polymer admixtures help give **Firenze™** superb adhesion, durability and make it highly water-repellant. **Tonachino Firenze™** comes in a white paste that can be tinted any color.

Tonachino Firenze™ enhances elegant wall spaces in Villas, commercial buildings, theaters, offices and any other interior or exterior space that requires the highest quality wall treatments. **Tonachino Firenze™** allows you to create a wide variety of Interior finishes with state -of-the-art effects in any color and texture. **Tonachino Firenze™** can be used as a finish coat for interior and exterior walls, ceilings, and many other architectural details. Primarily applied to concrete, block, plaster and gypsum board substrates, the product can also be used to beautify most other smooth-surfaced materials.

Usage: For interior and exterior spaces.

Composition: **Tonachino Firenze™** is shipped as a white, paste-base that contains the following:

- **Pure Slaked Lime:** The main ingredient in **Tonachino Firenze™** plaster, Pure Slaked Lime contributes to the high quality appearance of the finish. The Pure Slaked Lime helps make the finish breathable and moisture-resistant.
- **River Sands:** Each grain of this specially-graded ingredient measures only 0.2 to 0.6 MM in diameter to help give **Tonachino Firenze™** its strength, density and classic beauty. The round grains of sand have had all dust and salts removed before drying in ovens.
- **Polymeric Resin:** **Tonachino Firenze™** ease of workability during application and extreme durability after it has been applied comes from the product's patented mixture of Acrylic polymers.

Colors: **Tonachino Firenze™** can be tinted any color using Universal tints or machine colorants. Meoded's natural concentrated "VOC Free" pigments are recommended.

- **Coverage Guidelines:** **Tonachino Firenze™** yields a high coverage rate. In most standard applications,

20 kilograms of **Tonachino Firenze™** covers 110-180 square feet in two coats. Available in the following sizes:

- One Quart = 1.0 kg (2.2 lbs.)
- One Gallon = 5 kg (11 lbs)
- 4.25 Gallon = 20 kg (44 lbs)

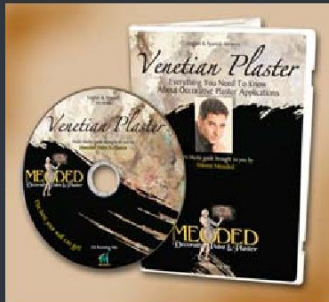
Applicable Standards for **Tonachino Firenze™**

- **ASTM E 84:** Provides a Class A finish complying with ASTM E 84 – Surface Burning Characteristics of Building Materials when applied over inorganic reinforced cement board as follows:
Flame Spread: 0
Smoke Density: 0.

Preparation:

Protection: Surface should be smooth, clean and free of contamination. Tape, mask and cover adjacent surfaces to protect them from splatter.

Interior new surface: Prime substrate with PVA acrylic primer and let it dry fully. Apply one coat of (Continued)



Note: To the best of our knowledge, the information contained herein is accurate. However, Meoded Paint & Decoration assumes no liability whatsoever for the accuracy or completeness of the information contained herein. Final determination of the suitability of any information or material for the use contemplated the manner of use and whether there is any infringement of patents is the sole responsibility of the user. Additional information may be obtained through your local sales representative or the Meoded Sales Office.



Technical Data Sheet

TONACHINO FIRENZE™



Preparation(continued)

diluted Meoded Quartz Primer™ allowing it 3-5 hours to dry.

Interior & Exterior existing surface- Patch and repair any damaged substrates. Sand oil-based paints and glossy surfaces. Prime substrate with multi-purpose primer and let it dry fully. Then apply one coat of diluted Meoded Quartz Primer™ allowing it to dry for 3-5 hours. Preparation of flat surfaces requires only the application of diluted Meoded Quartz Primer™.

Exterior Brown coat- Pressure wash and clean surfaces. When surface has dried completely, apply the quartz primer diluted with 50% water. Let it dry at least 4 hours. Fill low spots and create a flat surface by applying a leveling coat using finer grain cement or acrylic base material over the brown coat.

Installation:

General: *Meoded* offers a wide variety of specialty plaster tools including stainless steel trowels and spatulas used to install *Tonachino Firenze™*.

- **Brown Coat:** Refer to ASTM C926 – *Application of Portland Cement-Based Plaster* and the Portland Cement Association's *Portland Cement Plaster (Stucco) Manual*. Minimize the amount of finish coat needed by floating the brown coat to produce smooth, level substrates. Avoid shrinkage and cracking by paying close attention to moist curing requirements. Cure for at least seven (7) days before applying the finish coat. Twenty-one (21) days curing are recommended. Embedding a fiber mesh in the brown coat or the first coat may further reduce cracking. Use stainless steel trowel or spatula to apply the two coats of *Tonachino Firenze™*.
- **First coat-** Apply a thin, even first coat of *Tonachino Firenze™* that covers the entire wall. While *Firenze™* is still moist, it is recommended to use a wet sponge or a plastic float to avoid trowel marks. Allow at least 12 hours for the first coat to dry.
- **Second coat:** If necessary, lightly sand the first coat with 180-320 grit sandpaper. Apply the second coat in the same manner as the first coat. While *Firenze™* is still moist, *Meoded* recommends the use of a wet sponge or a plastic float to create a more uniform design. Use a clean trowel to smooth the surface after the material has set for few minute. Avoid excessive pressure that will result in formation of dark trowel marks.

Custom Finishes: A mock-up or an approved sample board should be used as a standard for a custom finish project. *Meoded* provides personal consultation services to help develop custom applications.

Special Effects: Unique metallic effects and custom stencils can be integrated to enhance the elegant and

rich appearance of *Tonachino Firenze™*.

Sealer- After a minimum of 48 hours *Water-block™*, a water -repellent sealer is recommended to provide your finish with protection from moisture and dirt.

Clean-Up: Remove temporary protection, such as masking tape. Clean up spills and splatters using methods that will not damage surfaces.

Delivery, Storage and Handling

- Keep materials away from direct sunlight. Store them in original, unopened packages in a dry, dark location at temperatures between 45 and 95 degrees F. Always wear OSHA-compliant eye protection. Wear a respirator to sand or scrape the product. Work only in well-ventilated areas. Avoid prolonged skin contact. Avoid working with the material in temperatures below 45 degrees F or above 95 degrees F. Keep away from children. Do not use products older than one year. Read the entire MSDS and product labels.

Appearance Tolerances:

- The application and field conditions may alter the product's appearance. Colors and textures displayed on color cards and product samples are approximate, not exact. Contractors should prepare mock-ups and/or samples to display the actual materials and workmanship prior to final approval. Mottling and variations in appearance and hue are a normal part of any plaster surface and add to *Tonachino Firenze™*'s aesthetic appeal.

Availability:

Meoded products are sold through the company's network of distributors throughout the United States. Contact *Meoded* or visit our

www.meodedpaints.com for referrals to local sources.

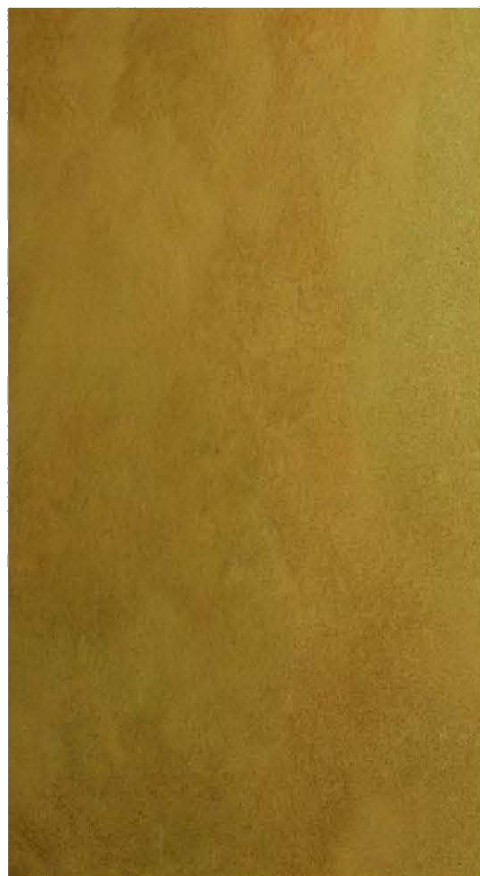
Page

Note: To the best of our knowledge, the information contained herein is accurate. However, Meoded Paint & Decoration assumes no liability whatsoever for the accuracy or completeness of the information contained herein. Final determination of the suitability of any information or material for the use contemplated the manner of use and whether there is any infringement of patents is the sole responsibility of the user. Additional information may be obtained through your local sales representative or the Meoded Sales Office.



Technical Data Sheet

TONACHINO FIRENZE™



Product Warranty

Meoded expressly warrants its products to be fit for the ordinary purpose for which they are intended for a period of five years from the date of installation when applied and used within one year of the date of purchase and in accordance with the manufacturer's written instructions.

Meoded Paints & Decoration™ reserves the right to inspect installations prior to resolving any claims made under this warranty. This limited warranty is exclusive and supercedes all other warranties: either written oral or otherwise implied. Meoded Paints & Decoration™ also excludes any liability for consequential damages. Meoded's liability under this warranty is limited to the replacement of products found to be defective or refund to original purchaser, with proof of purchase.

Cleaning: Use a dry cloth to remove dust and loose dirt from surfaces, then wipe them with a clean damp cloth as needed. Mild detergents or proprietary cleaning agents may also be used. Scrub gently or use a low-pressure water stream if necessary. Solvents such as acetone or mineral spirits can also be used, provided proper safety procedures are observed. Clean vertical surfaces moving upward from the bottom. Use a damp rag followed by a dry rag to remove any remaining cleaning agents. Find a small, inconspicuous portion of the surface to test cleaning products and methods before applying them to a wider area. Follow the manufacturer's package label instructions.

Blemishes: Some scuff marks, scratches and stains that resist normal cleaning techniques may respond to light sanding with 1000-grit sandpaper. Find a small, inconspicuous portion of the surface to test these techniques. Reapply sealer and/or wax to sanded areas as necessary.

Repairs: The application style of **Tonachino Firenze™** makes it easy to blend-in repairs. Contact **Meoded** for details.

Warning! This product may contain traces of chemicals known to the state of California to cause cancer and birth defects or other reproductive harm.

Technical Services & Support:

Meoded provides customers with any level of assistance they may need to gain full value from our products. Designers can call upon our professional staff to match colors or create new colors for custom installations. We're ready to provide color charts and sample boards for texture evaluations and comparisons. Installers can call upon our master craftsman for advice and guidance at every step of the installation process. If you have any questions whatsoever, our enthusiastic and courteous staff will provide the support you need to experience the **Tonachino Firenze™** advantage.

Every **Meoded** product comes with instructions that are more than adequate to guide any finish contractor or home owner to a successful installation. In addition, we offer professional seminars for applicators of all skill and experience levels. We teach everything from the basic installation steps to tips and techniques for artists and artisans.

For more info about specifications or samples, please contact

1-888-8MEODED
www.meodedpaints.com
meodedpt@aol.com

Note: To the best of our knowledge, the information contained herein is accurate. However, Meoded Paint & Decoration assumes no liability whatsoever for the accuracy or completeness of the information contained herein. Final determination of the suitability of any information or material for the use contemplated the manner of use and whether there is any infringement of patents is the sole responsibility of the user. Additional information may be obtained through your local sales representative or the Meoded Sales Office.

